



JOBSITE360



TEMPORARY LIGHTING & POWER DISTRIBUTION

THE BRIGHT WAY TO POWER JOBSITES



JOBSITE360

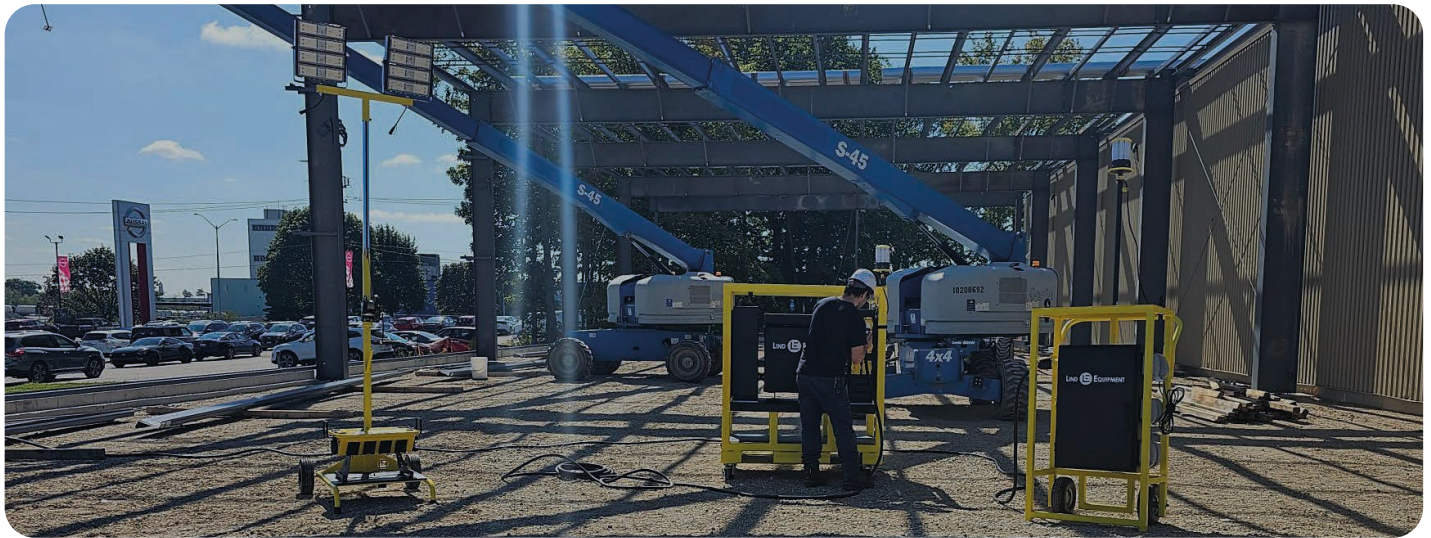
Powered By

LIND  EQUIPMENT

JOBSITE360 GIVES CONSTRUCTION MANAGERS PEACE OF MIND

Jobsite360 is a turnkey approach to the way you handle **temporary lighting** and **power distribution** on your jobsites.

Lind Equipment takes over the entire planning and delivery process, providing you with peace of mind and leaving you one less thing to worry about.



- **Jobsite360 Layouts** – The Jobsite360 team will use the project’s architectural drawings to plan out what lighting and power distribution you’ll need, taking your unique requirements into consideration.
- **Jobsite Safety** – Jobsite360 delivers plans that comply with OSHA, MOL/WorkSafe regulations, ensuring safe and compliant temporary lighting and power installations.
- **Dedicated Team** – We provide dedicated teams to support you throughout the planning and execution of temporary lighting and power solutions, offering personalized assistance to meet your specific project needs.
- **Guaranteed Delivery** – The required temporary lighting and power equipment will be delivered promptly when needed, minimizing any delays in the project schedule.
- **Innovation** – Jobsite360 uses Lind Equipment’s award-winning equipment for reliable, efficient, and durable temporary lighting and power solutions that are Approved to UL & CSA standards meeting OSHA, MOL/WorkSafe, NEC, and CEC regulations.
- **Industry Expertise** – Lind Equipment boasts extensive experience in providing complete temporary lighting and power solutions, equipped to handle various projects and challenges effectively.



JOBSITE360 SERVICE

We Handle Everything From Design to Delivery – So You Don't Have To

1. You provide us with the project drawings, and our team of specialists creates a lighting and power layout for you, mapping out the equipment you need and where to install it on your jobsite. We take into account all safety and electrical requirements, as well as any project-specific needs.
2. Our layout keeps in mind the functionality and benefits of our products, **maximizing the efficiency of the jobsite**, which ultimately results in savings for you.
3. After incorporating your feedback on our layouts, we provide you with a **temporary lighting and power distribution bill of materials** so you can place your order.
4. After placing your order, you can schedule when you need the various pieces of equipment. Need all the temporary lighting and power equipment for Floors 1-3 now and Floors 4-6 in a month? No problem. **Our guaranteed delivery program makes sure that you can set it and forget it.**
5. Your project is assigned a dedicated success manager to provide ongoing support. **Enjoy peace of mind** with a hassle-free warranty and a team of knowledgeable professionals you can always depend on.

START TODAY!

Let's plan your next jobsite together. Book a call to see how Jobsite360 saves you time, risk, and hassle.



SCAN QR CODE

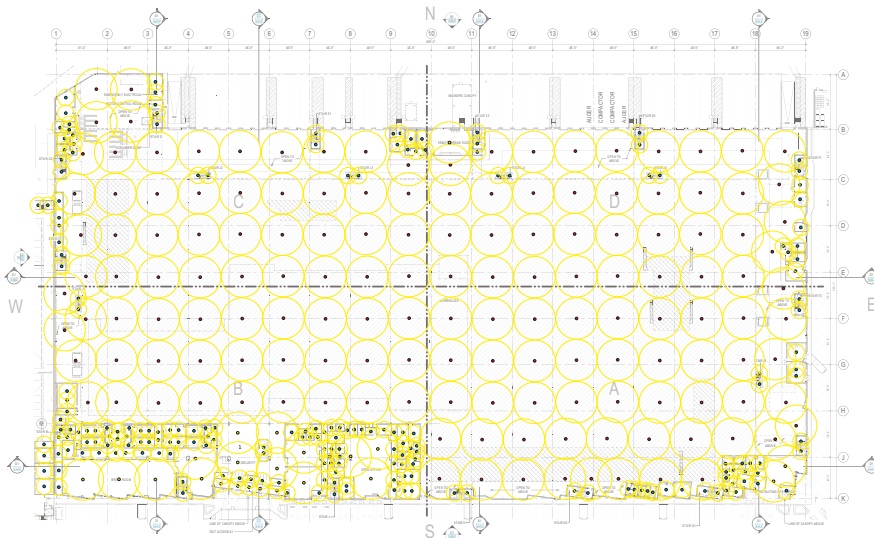
LIGHTING & POWER LAYOUT EXAMPLES

Designed to Integrate Seamlessly with Your Code and Spec

Each Jobsite360 Lighting and Power Layout is tailored to your project's floorplans, showing you exactly what you need and where you need it. Every layout is designed with your project's functionality in mind, maximizing the performance of our products and improving jobsite efficiency – ultimately saving you time and money.

Lighting Layout Example

Project: 405,000 Square-Foot Warehouse



JOBSITE360 TEMPORARY LIGHTING LAYOUT

This layout is intended as a tool to visualize and determine the lighting required for this project. It is not a final installation guide.

Light levels to a minimum of 5fc

LEGEND OF FIXTURES PROPOSED IN LAYOUT

- Beacon360 Blaze**
100W LED Low-Bay Wide Area Light
50ft diameter light coverage
Installation height: 8ft-15ft
- Beacon120 High-Bay**
120W LED High-Bay Light
50ft diameter light coverage
Installation height: 16ft-25ft
- Beacon360 Spark**
20W LED Modular Stringlight
20ft diameter light coverage
Installation height: 8ft-10ft

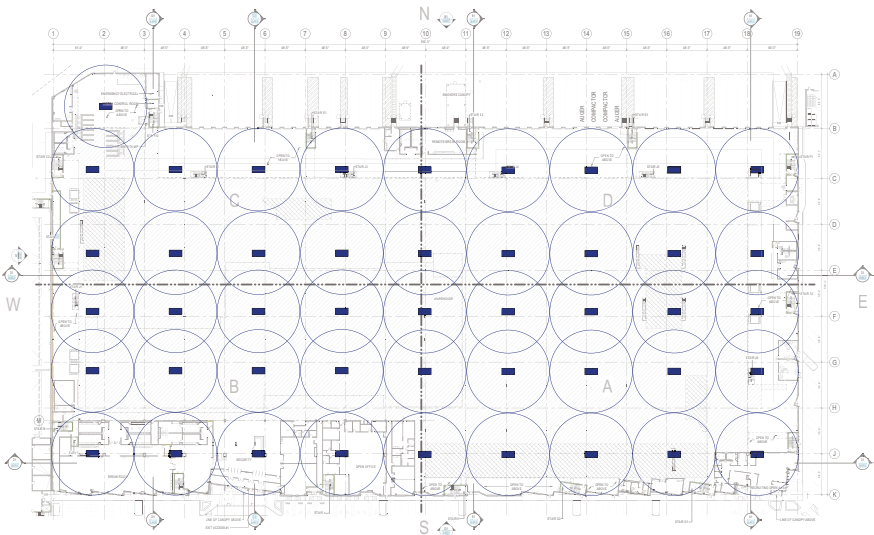
TOTAL UNITS USED ON THIS FLOOR:

- 17pcs - Beacon360 Blaze
- 151pcs - Beacon120 High-Bay
- 214pcs - Beacon360 Spark

JOBSITE360 LIND EQUIPMENT

Power Layout Example

Project: 405,000 Square-Foot Warehouse



JOBSITE360 POWER ESTIMATE/LAYOUT

This layout is intended as a tool to visualize and determine the power distribution required for this project. It is not a final installation guide.

LEGEND OF FIXTURES PROPOSED IN LAYOUT

- Lind Power Unit**
Estimated coverage area per recommended unit is 100ft x 100ft (10,000ft²)

TOTAL UNITS USED ON THIS FLOOR:

- 38pcs - Lind Power Unit

ASSUMPTIONS

- A Lind Power Unit can be any of the following: Transformer Cart, Power Dolly or 50A Power Distribution Box.
- We estimate that our power units have a 100ft x 100ft (10,000ft²) area of coverage per unit. This assumes our power units are being accessed by trades using 50ft extension cords to power tools and equipment.
- On this project, for every 7 power units shown, we have recommended 1x 75kVA Transformer Cart and 6x 50A Power Distribution Boxes in the BOM.
- The power unit coverage shown is based solely on the gross floor area of this section of the building and reflects total floor-plate coverage only. It does not account for obstructions, wall separations, or load-specific distribution needs.
- Breakdown of the recommended part numbers can be found in the included quote.









JOBSITE360 LIND EQUIPMENT

JOBSITE360 TEMPORARY LIGHTING

A Completely Modular Plug & Play Lighting System

We work to ensure that our products do their job so you can concentrate on doing yours. Jobsite360 lights are built with high-quality components, ultra-efficient LEDs and innovative features that make your projects run smoother & safer.

Compared to traditional LEDs, our Jobsite360 lighting is a game-changer, slashing material and labor costs by a minimum of 60% while also reducing energy consumption by 40% or more.

-  Modular 14/3 SJTW daisy-chain
-  Theft-resistant 3-pin quick-connects
-  Field serviceable
-  Temperature rating -40°F to 104°F (-40°C to 40°C)
-  3-year no-hassle warranty
-  IP65 weather and wet location rated
-  Drop tested to surpass military-grade standards
-  90V – 277V input range
-  Built-in surge protection
-  Approved to UL & CSA standards

**Meeting OSHA, MOL/WorkSafe, NEC, and CEC regulations.*



Beacon360 Blaze
100W LED Low-Bay
Wide Area Light



Beacon120 High-Bay
120W LED High-Bay Light



Beacon360 Spark
20W LED Modular Stringlight



Beacon980 Floodlight
200W Large Area Floodlight



Beacon980 Light Tower
800W LED Light Tower



Beacon78 Solar Tower
600W LED Solar Tower

Check It Out
On Our Website

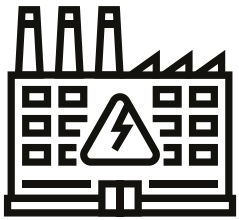


SCAN QR CODE

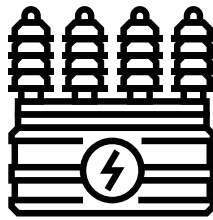
JOBSITE360 POWER TRANSMISSION

Powering Every Step of Your Jobsite

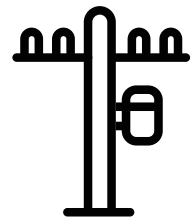
We provide complete power solutions for every stage of your jobsite – from the utility feed to the tools and equipment you use every day. Our Jobsite360 power distribution products deliver safe, reliable performance in the toughest conditions, keeping your site powered and productive.



Power Generation Station
(High Voltage)



Substation
(High to Medium Voltage)



Distribution Lines & Transformer
(Medium Voltage to 480V or 600V)



Power Dolly
(120/208V)

OR

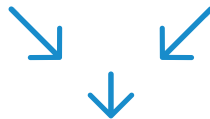


Transformer Cart
(480V or 600V to 120/208V)

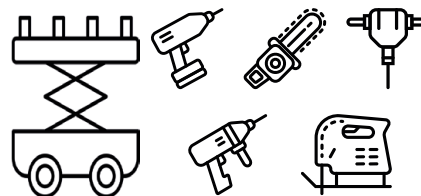


Power Container
(480V or 600V)

**Requires a pre-transformed power feed*



50A PDB, 50A HP, 30A PDB
(120/208V)













General Tools & Equipment
(120/208V)

JOBSITE360 POWER DISTRIBUTION

A Portable, Easily Maintained Power Distribution System

We have taken an innovative approach in an area that has failed to evolve over the years.

We designed our products to provide you with quick and convenient access to electrical components for service and maintenance, while also maintaining a high level of portability and usability.

-  1-year no-hassle warranty
-  NEMA 3R weatherproof enclosure
-  Scalable in sizes and capacity
-  Customizable and versatile
-  Multiple input styles
-  Portable
-  Lockable Enclosure
-  Easily Maintained
-  Universal compatibility
-  Approved to UL & CSA standards

**Meeting OSHA, MOL/WorkSafe, NEC, and CEC regulations.*



Power Container
600A - 2500A
Power Distribution Container



Transformer Cart
30KVA, 45KVA or 75KVA
Power Dist. Transformer Cart



Power Dolly
100A, 200A or 400A
Power Distribution Dolly



50A Power Box
50A Power Distribution Box



Hitching Post
50A Equipment
Charging Station



30A Power Box
30A Power Distribution Box

Check It Out
On Our Website



SCAN QR CODE

PROJECT GALLERY



PROJECT GALLERY



JOBSITE360 SUCCESS STORY

Best Practices

For contractors looking to make the biggest positive impact on their operations, standardizing Jobsite360 across all divisions and locations generates huge savings in labor, equipment and operations. PCL's Alberta division is a perfect example of the power of Jobsite360 as a standardized solution. The group standardized on Jobsite360 lighting starting in 2016, turning jobsite lighting into an asset instead of an expense. This means building a fleet of Jobsite360 lights that can be used again and again across many projects, creating massive efficiencies.

By standardizing on Jobsite360, PCL Alberta has achieved:

- Reduction in onsite power costs, which are often borne by the GC in Canadian projects. PCL Alberta calculated that on the ICE District project alone, it drove over \$3M in energy savings.
- Reduction in labor costs, as all Jobsite360 lights are plug and play and crews are familiar with the spacing and brightness from repeated use.
- Reduction in asset costs, as lights are reused from job to job rather than being thrown out afterwards. The durability of the lights is such that many of the original lights purchased in 2016 are still in service. The PCL shop is trained to make maintenance repairs, and larger repairs are handled quickly by Lind Equipment, ensuring the longest life possible for the assets.

As experts in all aspects of temporary lighting and power, from designing to planning to maintaining, **ask us how you would benefit from standardizing on Jobsite360** across your organization.



PCL Construction
ICE District
Edmonton, AB - Canada

BEACON360 BLAZE DATASHEET

Features

- Easily relocate or interchange with other Jobsite360 lights throughout the site as the project progresses.
- Light head and daisy-chain utilize modular theft resistant quick-connects.
- Quickly transition onto a tripod or floor stand.
- A variety of mounting options.
- Dimmable to half-power.
- IP65 weather and wet location rated.
- 90V - 277V input range.
- Approved to UL & CSA standards.

*Meeting OSHA, MOL/WorkSafe, NEC, and CEC regulations.

Applications

- All-purpose jobsite area light.
- Replace stringlights (250ft worth!)
- Replaces a 400W metal-halide light.

Recommended guidelines to meet OSHA & MOL/WorkSafe regulations

- **Installation height:** 8ft - 15ft
- **Spacing:** 50ft
- **Coverage Area:** 2,500ft² to 5fc



*The above LE360LED models come standard with a 15ft 18/3 SJTW cord with 5-15 Plug. The 50ft Q3 14/3 SJTW daisy-chain is available for these models at request.



OVERVIEW

| | |
|-------------------------------|--|
| Part Number | LE360LED-25P25C-Q3 (120V & 277V) |
| Description | 100W LED Low-Bay Wide Area Light |
| Lumens | 14,700 @100% / 7,900 @ 50% |
| Daisy-Chain (Q3 Model) | <ul style="list-style-type: none"> • 50ft 14/3 SJTW (25ft male quick-connect and 25ft triple female quick-connect) (15A Rated) • Detachable from light head via quick-connect • Watertight 3-pin locking connectors |
| Amp Draw | <ul style="list-style-type: none"> • @ 120V - 0.83A • @ 277V - 0.37A |
| Linkage Rating | <ul style="list-style-type: none"> • @ 120V - 14 units on a 15A/120V circuit (equal to 35,000ft² of coverage to 5fc) • @ 277V - 32 units on a 15A/277V circuit (equal to 80,000ft² of coverage to 5fc) |
| Weight (head) | 4.5lbs |
| Construction | Cast aluminum housing with polycarbonate lens |
| Mounting Options | Eyebolt (included), 4-8ft Tripod (-TR) Floorstand (-FS), Magnet (-MAG) Scaffold Clamp (-CLAMP) |
| Temp to Perm Option | LE360LED-BE, light head will come with a 10ft cord with bare ends and 6in stripped |

BEACON120 HIGH-BAY DATASHEET

Features

- Quick out-of-the-box plug & play installation.
- State-of-the-art DirectDrive technology eliminates the need for an external driver.
- Easily relocate or interchange with other Jobsite360 lights throughout the site as the project progresses.
- Light head and daisy-chain utilize modular theft resistant quick-connects.
- Compact and lightweight, easy to uninstall, transport and store.
- IP65 weather and wet location rated.
- 90V - 277V input range.
- Approved to UL & CSA standards.

**Meeting OSHA, MOL/WorkSafe, NEC, and CEC regulations.*

Applications

- Area lighting for high ceiling heights
- Replaces a 400W metal-halide light

Recommended guidelines to meet OSHA & MOL/WorkSafe regulations

- **Installation height:** 16ft - 25ft
- **Spacing:** 50ft
- **Coverage Area:** 2,500ft² to 5fc



OVERVIEW

| | |
|-------------------------------|---|
| Part Number | LE-HB120LED-25P25C-Q3 (120V & 277V) |
| Description | 120W LED High-Bay Light |
| Lumens | 15,250 lumens |
| Daisy-Chain (Q3 Model) | <ul style="list-style-type: none">• 50ft 14/3 SJTW (25ft male quick-connect and 25ft triple female quick-connect) (15A Rated)• Detachable from light head via quick-connect• Watertight 3-pin locking connectors |
| Amp Draw | <ul style="list-style-type: none">• @ 120V - 1A• @ 277V - 0.44A |
| Linkage Rating | <ul style="list-style-type: none">• @ 120V - 12 units on a 15A/120V circuit (equal to 30,000ft² of coverage to 5fc)• @ 277V - 27 units on a 15A/277V circuit (equal to 67,500ft² of coverage to 5fc) |
| Weight (head) | 2.6lbs |
| Construction | High strength lightweight aluminum housing with polycarbonate lens |
| Mounting Options | Rugged stainless steel carabiner |
| Temp to Perm Option | LE-HB120LED-BE, light head will come with a 10ft cord with bare ends and 6in stripped |

BEACON360 SPARK DATASHEET

Features

- Effortlessly branch off into individual rooms.
- Provides flexibility to install lights exactly where needed.
- Easily relocated or interchanged with other Jobsite360 lights throughout the site as the project progresses.
- Light head and daisy-chain utilize modular theft resistant quick-connects.
- IP65 weather and wet location rated.
- 90V - 277V input range.
- Approved to UL & CSA standards.

**Meeting OSHA, MOL/WorkSafe, NEC, and CEC regulations.*

Applications

- Replaces all types of stringlights
- Corridors
- Small/medium rooms
- Stairwells

Recommended guidelines to meet OSHA & MOL/WorkSafe regulations

- **Installation height:** 8ft - 10ft
- **Spacing:** 20ft
- **Coverage Area:** 400ft² to 5fc



OVERVIEW

| | |
|-------------------------------|---|
| Part Number | LE360LEDS-10P10C-Q3 (120V & 277V) |
| Description | 20W LED Modular Stringlight |
| Lumens | 2,400 lumens |
| Daisy-Chain (Q3 Model) | <ul style="list-style-type: none"> • 20ft 14/3 SJTW (10ft male quick-connect and 10ft triple female quick-connect) (15A Rated) • Detachable from light head via quick-connect • Watertight 3-pin locking connectors |
| Amp Draw | <ul style="list-style-type: none"> • @ 120V - 0.17A • @ 277V - 0.073A |
| Linkage Rating | <ul style="list-style-type: none"> • @ 120V - 60 units on a 15A/120V circuit (equal to 1,200 linear feet or 24,000ft² of coverage to 5fc) • @ 277V - 164 units on a 15A/277V circuit (equal to 3,280 linear feet or 65,600ft² of coverage to 5fc) |
| Weight (head) | 1.5lbs |
| Construction | High impact plastic & aluminum housing with polycarbonate lens. |
| Mounting Options | Integrated molded mounting eyelet |
| Temp to Perm Option | LE360LEDS-BE, light head will come with a 10ft cord with bare ends and 6in stripped |

Q3 DAISY-CHAIN DATASHEET

Features & Benefits

- Matches the diameter of light the specific light head puts out to 5fc.
- Can be run on a 120V to 277V single-pole circuit.
- 15A cable and connector rating.
- 14/3 SJTW cord to ensure longer circuit runs.
- Theft-resistant 3-pin quick-connects.
- Detachable from light head via quick-connect.
- Watertight 3-pin locking connectors.
- Triple tap connector for branching out in multiple paths.
- Easily relocate or interchange with other Jobsite360 lights.
- Quick out-of-the-box plug & play installation.

Q3 50ft & 20ft Replacement Daisy-Chains

50ft Q3 Daisy-Chain



LE14-25P25C-Q3

50ft 14/3 SJTW Replacement Q3 Daisy-Chain (25ft male quick-connect and 25ft triple female quick-connect)

20ft Q3 Daisy-Chain



LE360LEDS-P2-Q3

20ft 14/3 SJTW Replacement Q3 Daisy-Chain (10ft male quick-connect and 10ft triple female quick-connect)

Quick-Connect Daisy-Chain Adapters

20ft Bare End to Quick-Connect



LE14-BEQF-20

For use on 15A 120V-277V single-pole circuits

20ft 5-15P to Quick-Connect



LE14-515QF-20

For use on 15A 120V single-pole circuits

20ft L5-15P to Quick-Connect



LE14-L515QF-20

For use on 15A 120V single-pole circuits

20ft L7-15P to Quick-Connect



LE14-L715QF-20

For use on 15A 277V single-pole circuits

Jobsite360 Lights With Q3 Daisy-Chain

Beacon360 Blaze

100W LED Low-Bay Wide Area Light with 50ft Q3 daisy-chain



LE360LED-25P25C-Q3

Beacon120 High-Bay

120W LED High-Bay Light with 50ft Q3 daisy-chain



LE-HB120LED-25P25C-Q3

Beacon360 Spark

20W LED Modular Stringlight with 20ft Q3 daisy-chain



LE360LEDS-10P10C-Q3

BEACON980 FLOODLIGHT DATASHEET

Features

- Reinforced mounting yoke is adaptable to install on virtually any base.
- No expensive and breakable ballast.
- Available as retrofit kit to upgrade existing light towers and carts.
- State-of-the-art DirectDrive technology eliminates the need for external driver.
- Cart model features built-in generator pad, winch-assisted 12ft mast and foam filled rubber tires for completely safe and hassle-free operation.
- IP65 weather and wet location rated.
- 90V - 277V input range.
- Approved to UL & CSA standards.

**Meeting OSHA, MOL/WorkSafe, NEC, and CEC regulations.*



Applications

- Crane/pit lighting
- Concrete pours
- General site lighting
- Excavations
- Light carts
- Demolition



OVERVIEW

| | |
|----------------------------|---|
| Part Number | LE980LED |
| Description | 200W Large Area Floodlight |
| Lumens | 30,000 lumens |
| Amp Draw (@120V) | 1.67A |
| Weight (light head) | 16lbs |
| Cord | 15ft 18/3 SJTW with 5-15 plug |
| Construction | High strength lightweight aluminum housing with polycarbonate lens |
| Mounting options | Rugged steel adjustable bracket |
| LE980LED-TRW | Single light head, comes with a heavy-duty tripod with winch (max height: 12ft) |
| LE980LED-CART-W | Single light head, comes with a 2-wheel cart with winch (max height: 12.5ft) |
| LE980LED-CART-TD-W | Dual light head, comes with a 2-wheel cart with winch (max height: 12.5ft) |

BEACON980 LED LIGHT TOWER OVERVIEW

Features

- Unparalleled light output.
- Plugs into a 120V outlet, 2 units can run on a single 15A/120V circuit.
- Can also run on a user supplied 1,000W or 2,000W suitcase generator.
- Electric mode provides quiet operation with no fumes.
- Easily fits in the back of a pickup truck.
- Heavy-gauge powder coated steel construction.
- Forklift/telehandler pockets.
- Fits through a standard doorway.
- Approved to UL & CSA standards.

**Meeting OSHA, MOL/WorkSafe, NEC, and CEC regulations.*



Applications

- Replaces a 4,000W metal-halide light tower
- Large-area site lighting
- Concrete pours
- Jobsite roadway and walkway lighting



LE980LED-T-4DKIT

Add a clip-on diffuser kit to your Beacon980 LED Light Tower

OVERVIEW

| | |
|-------------------------|---|
| Part Number | LE980LEDV-T4 |
| Description | 800W LED Light Tower |
| Lumens | 120,000 lumens |
| Amp Draw (@120V) | 6.67A |
| Height | 16ft (20ft for the EM Versions) |
| Linkage Rating | 2 units on a 15A/120V circuit |
| Run Time | Approx. 45 hours on a user supplied 2000W suitcase generator paired with included auxiliary fuel tank |
| Wind Resistance | 45mph (72km/h) |
| Portability | All-terrain caster tires, rigging eyelet and forklift/telehandler pockets |
| Other Models | Towable - LE980LEDV-TRAILER Extended Mast - LE980LEDVEM-T4 EM Towable - LE980LEDVEM-TRAILER |

Check out the full datasheet and our standard configurations
Go To: jobsite360.net/products

BEACON978 LED SOLAR TOWER OVERVIEW

Features

- Up to 26 hours of lighting on a single charge.
- Programmable timer.
- Dusk-to-dawn lighting control.
- Selector switch to run either 2 or 4 light heads at a time.
- 20A 120V GFCI duplex utility receptacle.
- Adjustable solar panel angles.
- Equipped with a 1,210W solar array.
- Powered by 8.4kWh Lithium-Ion battery.
- Heating element for the battery.
- Ability to perform in cold environments.
- AC (15A 120V) & PV (solar) charging abilities.
- Incredibly easy to deploy.
- Very low maintenance.
- Approved to UL & CSA standards.

**Meeting OSHA, MOL/WorkSafe, NEC, and CEC regulations.*

Applications

- Off-grid remote lighting
- Large-area site lighting
- Concrete pours
- Jobsite roadway and walkway lighting



LE980LED-T-4DKIT

Add a clip-on diffuser kit to your Beacon978 LED Solar Tower

OVERVIEW

| | |
|-----------------------------|--|
| Part Number | LE978LEDVSOLAR-TRAILER |
| Description | 600W LED Solar Light Tower |
| Lumens | 90,000 lumens |
| Amp Draw (@120V) | 5A |
| Height | 16ft 10in (fully extended) |
| Run Time (@100% SOC) | <ul style="list-style-type: none"> • 2 Light Heads = 26 hours • 4 Light Heads = 13 hours |
| Wind Resistance | 45mph (72km/h) |
| Portability | 15in trailer tires, 2in tow ball |
| Dimensions | Stowed: 134"L X 72"W X 98"H Deployed: 134"L X 96"W X 202"H |
| Solar Array | 1,210W Solar Array (2x 605W panels) |

Check out the full datasheet and our standard configurations
Go To: jobsite360.net/products

POWER CONTAINER OVERVIEW

Lind Equipment's **Power Container** is the starting point for jobsite power, connecting directly to the grid. Developed specifically for construction sites, its modular design allows for faster delivery and flexible setup without sacrificing performance or functionality. The **Power Container** is available in 10ft or 20ft and can easily be set up to supply power to our **Transformer Carts** and **Power Dollies** along with powering cranes and other heavy equipment.

Features

- Accepts parallel service feeds.
- Pre-installed lockable meter cabinet.
- Universal busbar splitter trough.
- Easy-to-swap busbar lugs.
- Multiple sizes of disconnects available.
- Optional: Transformer and low voltage panel.

Benefits

- Lockable roll-up container door.
- Forklift /telehandler pockets.
- Hoisting eyelets.
- Interior LED lighting.
- Customizable configurations.
- Awning & rubber gasket for wire feeds.
- Optional: Co-branded with company colours/ logos.



OVERVIEW

| | |
|------------------------|--|
| Description | Power Distribution Container |
| Container Sizes | 10ft or 20ft |
| Input Amperage | 600A - 2500A |
| Input Voltage | 480V or 600V |
| Output Amperage | 15A - 800A per disconnect |
| Output Voltage | 480V or 600V <i>*120/208V available at request</i> |
| Approvals | Approved to UL & CSA standards <i>*Meeting OSHA, MOL/WorkSafe, NEC, and CEC regulations</i> |



Check Out Our
Power Container
Video!



SCAN QR CODE

Check out the full datasheet and our standard configurations
Go To: jobsite360.net/products

TRANSFORMER CART OVERVIEW

Lind Equipment's **Transformer Cart** is the reliable link between your power source and distribution, delivering safe and portable jobsite power. Designed for flexibility and durability, it fits through standard doors and moves easily across tough terrain. The **Transformer Cart** is easily deployed and can be used to supply power to our **50A Power Distribution Box**, **50A Hitching Post**, **30A Power Distribution Box**, along with powering general tools and equipment.

Features

- Accommodates 30 - 75KVA transformers.
- Forklift/telehandler pockets.
- Hoisting eyelets.
- Heavy-duty swivel casters.
- Covered storage shelf.
- NEMA 3R weatherproof enclosure.
- Dedicated quad USB receptacle for charging mobile devices.
- Built-in Beacon360 Blaze area light.
- Safety handles.
- Fits through a standard doorway.

Installation Guidelines

- We estimate that this Lind power unit has a 100ft x 100ft (10,000ft²) area of coverage, assuming the use of 50ft extension cords to power tools and equipment.



OVERVIEW

| | |
|---------------------------------|---|
| Description | Power Distribution Transformer Cart |
| Input Amperage | 30A - 400A |
| Input Voltage | 480V or 600V |
| Transformers | 30KVA, 45KVA, 75KVA |
| Output Amperage | 100A - 225A |
| Output Voltage | 120/208V |
| Weatherproof Receptacles | 2-6 x 50A 125/250V TL (Cali Std) 6 x 20A 125V GFCI duplex (5-20R) 2 x 30A 250V TL (L6-30R) 1 x 4.8A quad USB |
| Construction | Heavy-gauge powder coated steel |
| Approvals | Approved to UL & CSA standards <i>*Meeting OSHA, MOL/WorkSafe, NEC, and CEC regulations</i> |
| Dimensions | 55.5" L x 30.75" W x 67.5" H |

Check out the full datasheet and our standard configurations
Go To: jobsite360.net/products

POWER DOLLY OVERVIEW

Lind Equipment's **Power Dolly** is a compact and portable solution for jobsite power distribution. **Designed with mobility in mind**, it offers quick access to electrical components while maintaining a strong focus on safety. The **Power Dolly** is easily deployed and can be used to supply power to our **50A Power Distribution Box**, **50A Hitching Post**, **30A Power Distribution Box**, along with powering general tools and equipment.

Features

- Configuration options from 100A - 400A.
- Hoisting eyelets.
- Foam filled tires.
- Storage shelf.
- Cable hooks.
- NEMA 3R weatherproof enclosure.
- Dedicated quad USB receptacle for charging mobile devices.
- Built-in Beacon360 Blaze area light.
- Forklift/telehandler pockets.
- Fits through a standard doorway.

Installation Guidelines

- We estimate that this Lind power unit has a 100ft x 100ft (10,000ft²) area of coverage, assuming the use of 50ft extension cords to power tools and equipment.



OVERVIEW

| | |
|---------------------------------|---|
| Description | Power Distribution Dolly |
| Input Amperage | 100A - 400A |
| Input Voltage | 120/240V or 120/208V <i>*480V or 600V available at request</i> |
| Weatherproof Receptacles | 2-8 x 50A 125/250V TL (Cali Std) 6 x 20A 125V GFCI duplex (5-20R) 2 x 30A 250V TL (L6-30R) 1 x 4.8A quad USB |
| Construction | Heavy-gauge powder coated steel |
| Approvals | Approved to UL & CSA standards <i>*Meeting OSHA, MOL/WorkSafe, NEC, and CEC regulations</i> |
| Dimensions | 22" L x 29" W x 51.25" H |

Check out the full datasheet and our standard configurations
Go To: jobsite360.net/products

50A POWER DISTRIBUTION BOX DATASHEET

Lind Equipment's **50A Power Distribution Box** is a rugged and portable unit built for efficient jobsite power management. Its unique design provides easy access to electrical components while prioritizing safety and durability. Compact and versatile, the Power Distribution Box is easy to transport, quick to deploy, and simple to maintain. Can be used to supply power to our **30A Power Distribution Box**, along with powering general tools and equipment.

Features

- Integrated GFCI receptacles.
- Dedicated quad USB receptacle for charging mobile devices.
- LED indicator light on the 50A input receptacle.
- Receptacles angled at 45° and protected with weatherproof covers.
- NEMA 3R weatherproof enclosure.
- Internal components are located under a false top for easy access.
- Electrical components are easy to source and readily available.

Installation Guidelines

- We estimate that this Lind power unit has a 100ft x 100ft (10,000ft²) area of coverage, assuming the use of 50ft extension cords to power tools and equipment.



OVERVIEW

| | |
|--------------------------|---|
| Part Number | 92000 |
| Description | 50A Power Distribution Box |
| Input | 50A 125/250V TL (Cali Std) |
| Output | 50A 125/250V TL (Cali Std) |
| Weatherproof Receptacles | 6 x 20A 125V GFCI duplex (5-20R) 1 x 30A 250V TL (L6-30R) 1 x 4.8A quad USB |
| Weight | 38lbs |
| Construction | Heavy-gauge powder coated steel |
| Approvals | Approved to UL & CSA standards <i>*Meeting OSHA, MOL/WorkSafe, NEC, and CEC regulations</i> |
| Dimensions | 16.5" L x 23.5" W x 15.5" H |
| Add-On Accessories | 91006 - 50ft power cord 6/3 + 8/1 STOW w/ 50A plug and connector 91007 - 100ft power cord 6/3 + 8/1 STOW w/ 50A plug and connector |

HITCHING POST DATASHEET

Lind Equipment's **Hitching Post** is a portable charging station for battery powered equipment around the jobsite. When in transit or not in use, it can be folded and stowed to save on shipping costs and space. This product features innovations that make it compact, mobile, versatile, and most importantly safe.

Features

- Integrated GFCI receptacles.
- Foam filled tires.
- Built-in Beacon360 Blaze area light.
- Easily maintained.
- Fits through a standard doorway.
- Plug & play compatibility with other Lind products.
- Outdoor rated.
- Electrical components are easy to source and readily available.



OVERVIEW

| | |
|---------------------------------|---|
| Part Number | LE-HP120-50CS |
| Description | 50A Hitching Post (Equipment Charging Station) |
| Input | 50A 125/250V TL (Cali Std) |
| Weatherproof Receptacles | 10 x 20A 125V GFCI duplex (5-20R) 1 x 15A 125V GFCI Singlet (5-15R) |
| Weight | 250lbs |
| Construction | Heavy-gauge powder coated steel |
| Approvals | Approved to UL & CSA standards <i>*Meeting OSHA, MOL/WorkSafe, NEC, and CEC regulations</i> |
| Dimensions | Deployed: 131" L x 30" W x 53" H Stowed: 75" L x 30" W x 53" H |
| Add-On Accessories | 91006 - 50ft power cord 6/3 + 8/1 STOW w/ 50A plug and connector 91007 - 100ft power cord 6/3 + 8/1 STOW w/ 50A plug and connector |

30A POWER DISTRIBUTION BOX DATASHEET

Lind Equipment's **30A Power Distribution Box** is a rugged and portable unit built to supply power to a small task area. Its unique design provides easy access to electrical components while prioritizing safety and durability. Compact and versatile, the Power Distribution Box is easy to transport, quick to deploy, and simple to maintain. Can be used to supply power to general tools and equipment.

Features

- Integrated GFCI receptacles.
- Dedicated quad USB receptacle for charging mobile devices.
- LED indicator light on the 30A input receptacle.
- Receptacles angled at 45° and protected with weatherproof covers.
- Internal components are located under a false top for easy access.
- Electrical components are easy to source and readily available.
- NEMA 3R weatherproof enclosure.



OVERVIEW

| | |
|---------------------------------|--|
| Part Number | 92030 |
| Description | 30A Power Distribution Box |
| Input | 30A 125/250V TL (L14-30P) |
| Weatherproof Receptacles | 4 x 20A 125V GFCI duplex (5-20R) 1 x 4.8A quad USB |
| Weight | 27lbs |
| Construction | Heavy-gauge powder coated steel |
| Approvals | Approved to UL & CSA standards <i>*Meeting OSHA, MOL/WorkSafe, NEC, and CEC regulations</i> |
| Dimensions | 14.25" L x 16.5" W x 15.5" H |
| Add-On Accessories | LE10/4-10 - 10ft power cord, 10/4 SJTW w/ 30A plug and connector LE10/4-25 - 25ft power cord, 10/4 SJTW w/ 30A plug and connector LE10/4-50 - 50ft power cord, 10/4 SJTW w/ 30A plug and connector LE10/4-100 - 100ft power cord, 10/4 SJTW w/ 30A plug and connector |

WE PLAN

- Jobsite360 Lighting and Power Layout
- Lighting cost savings analysis
- Bill of materials
- Site visits



WE DELIVER

- Jobsite shipping
- Guaranteed delivery
- Customized features
- Service/repair
- No-hassle warranty



YOU SAVE!

- Costs savings calculator
- Reduced labor and prep work
- Jobsite360 Success Program



Purpose-built to save contractors time & money while creating a safer, more efficient jobsite.



Canada
5000 Yonge Street, Suite 1402
Toronto, ON M2N 7E9



United States
171 Cooper Avenue, Unit 106
Tonawanda, NY - 14150

Email the below to be connected with your local Jobsite360 representative.

info@jobsite360.net

JOBSITE **360**

Powered By

LIND  EQUIPMENT